

Dixon Sanitary Style Crimp Stems

Clamp End x Hose Shank

Features

- Sanitary style end
- Dixon® sanitary crimp stems are only to be used with Dixon sanitary stainless steel crimp ferrules on page 593
- Reference dixonvalve.com for crimp recommendations



Size	316 Stainless Steel Part #
1"	CSSR100-3A
1-1/2"	CSSR150-3A
2"	CSSR200-3A
2-1/2"	CSSR250
3"	CSSR300-3A
4"	CSSR400

Female I-Line End x Hose Shank

Feature

- To be used with sanitary ferrules on page 593

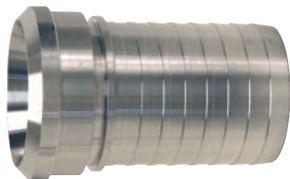


Size	316 Stainless Steel Part #
1-1/2"	CILR150
2"	CILR200
3"	CILR300
4"	CILR400

Bevel Seat End x Hose Shank

Feature

- To be used with sanitary ferrules on page 593



Size	Nut Used	316 Stainless Steel Part #
1"	13H-G100	CBSR100
1-1/2"	IXAN24	CBSR150
2"	IXAN32	CBSR200
3"	IXAN300	CBSR300
4"	IXAN64	CBSR400

Tube Weld End x Hose Shank

Feature

- To be used with sanitary ferrules on page 593



Size	316 Stainless Steel Part #
1-1/2"	CTER150
2"	CTER200
3"	CTER300
4"	CTER400