

**Excelon® design allows in-line or modular installation**  
**High efficiency oil and particle removal**  
**Quick release bayonet bowl**  
**Standard visual service life indicator turns from green to red when the filter element needs to be replaced**



**Technical data**

**Fluid:**  
Compressed air, neutral gases  
NOTE: Contact technical support for use with other media.

**Maximum pressure:**  
Transparent bowl: 150 psig (10 bar)  
Metal bowl: 250 psig (17 bar)  
(72) metal bowl w/autodrain: 116 psig (8 bar)

NOTE: Coalescing filters should be used in conjunction with a 5µm general purpose filter upstream to maximize filter element life and optimize performance.

**Operating temperature\*:**  
Transparent bowl: -30° to 125°F (-34° to 50°C)  
Metal bowl: -30° to 150°F (-34° to 65°C)  
\* Air supply must be dry enough to avoid ice formation at temperatures below 35°F (2°C).

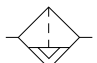
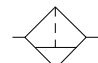
**Filtration:**  
Particle removal: 0.01 µm  
Remaining oil content: 0.01 ppm mg/m3 at 70°F (21°C)

**Materials F72C**  
Body: zinc  
Bowl transparent: polycarbonate  
Metal: zinc  
Metal bowl liquid level indicator lens: Transparent nylon  
Element: synthetic fiber and polyurethane foam  
Elastomers: chloroprene and nitrile  
Service life indicator materials- Body: transparent nylon.  
Internal parts: acetal.  
Spring: stainless steel.  
Elastomers: nitrile, chloroprene

**Materials F73C and F74C**  
Body: aluminum  
Transparent bowl: polycarbonate  
Transparent with guard: polycarbonate,  
Guard: aluminum  
Metal bowl: aluminum  
Metal bowl liquid level indicator lens: Transparent nylon  
Element: synthetic fiber and polyurethane foam  
Elastomers: chloroprene and nitrile  
Mechanical service indicator materials Body: transparent nylon  
Internal parts: Acetal  
Spring: Stainless steel  
Elastomers: nitrile

**Ordering information**

Models listed include PTF threads, service indicator, automatic drain, and a metal bowl with liquid level indicator.

ISO Symbols	Port Size	Model	Maximum Flow* scfm ( dm3/s)	Weight lb (kg)
 Automatic  Manual Drain	1/4"	F72C-2AD-AE0	9.5 (4.5)	1.2 (0.54)
	3/8"	F73C-3AD-AD0	21.2 (10.0)	1.2 (0.54)
	1/2"	F74C-4AD-AD0(std)	33.9 (16.0)	1.84 (0.83)
	1/2"	F74H-4AD-AD0 (hi-flow)	59.3 (28.0)	2.45 (1.11)
	3/4"	F74H-6AD-AD0 (hi-flow)	59.3 (28.0)	2.40 (1.10)

\* Maximum flow with 90 psig (6.3 bar) inlet pressure to maintain stated oil removal performance.

**Options selector**

**F7★-★★-★★-★★-★0**

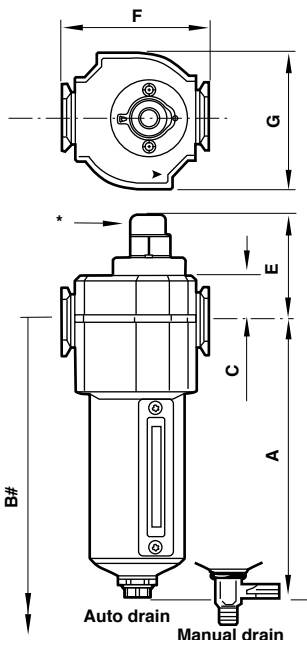
<b>Series</b>	<b>Substitute</b>		<b>Bowl*</b>	<b>Substitute</b>
72	2C		Metal w/ liquid level indicator (72, 73, 74)	D
73	3C		Long metal w/ liquid level indicator (72)	E
74	4C		Long transparent (72)	L
74 (High flow)	4H		Transparent with guard (73, 74)	P
<b>Port size</b>	<b>Substitute</b>		<b>Drain</b>	<b>Substitute</b>
1/4 (72 & 73)	2		1/4 turn manual	Q
3/8 (72, 73, 74)	3		Auto drain*	A
1/2 (73 & 74)	4		<b>Service life indicator</b>	<b>Substitute</b>
3/4 (74)	6		With (visual)	D
<b>Threads</b>	<b>Substitute</b>		Without	N
PTF	A			
ISO G parallel	G			

\* 72 Series auto drain is available only with long bowl option.

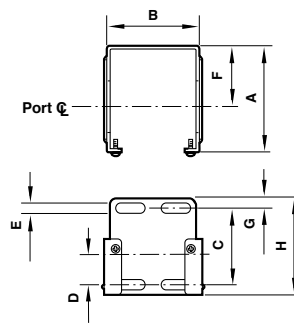
Accessories

	Wall mounting bracket*	Quikmount pipe adapters (quantity of 1) (NPT)	Quikclamp®† (quantity of 1)	Quikclamp® and wall bracket (quantity of 1)	Visual service indicator	Electrical service life indicator	Service kit Seal and gasket	Replacement elements
F72C	4224-50	4215-02 (1/4) 4215-03 (3/8)	4214-51	4214-52			4380-500	5925-09
F73C	4424-50	4315-01 (1/4) 4315-02 (3/8) 4315-03 (1/2) 4315-04 (3/4)	4314-51	4314-52	5797-50	4020-51R	4380-602	4444-01
F74C, F74H	4324-50	4315-02 (3/8) 4315-03 (1/2) 4315-04 (3/4)	4314-51	4314-52	5797-50	4020-51R	4380-730	4344-01 (F74C) 4344-02 (F74H)

\* Bracket kit does not include wall mounting screws.  
† Quikclamp is patented (US patent 5372392) and foreign patents.



Mounting bracket

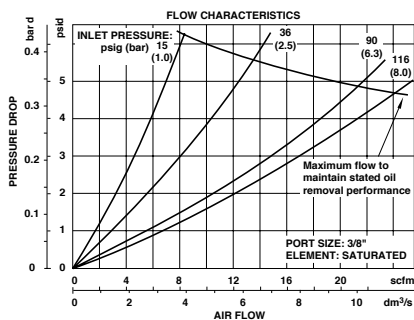


Series	A	B	C	D	E	F	G	H
72	2.36	1.65	1.54	0.73	0.16	1.50	0.24	2.01
73	2.64	2.36	1.89	0.75	0.28	1.50	0.24	2.40
74	3.11	2.72	1.97	0.79	0.20	2.01	0.24	2.40

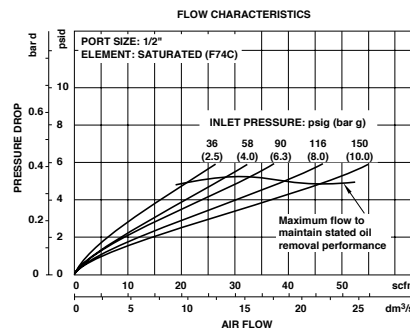
Series	Drain type	A	B	C	E	F	G
F72C	Auto	5.51	7.52	0.75	2.09	1.97	1.89
	Manual	5.83	7.83	0.75	2.09	1.97	1.89
F73C	Auto	5.80	8.15	0.98	2.36	2.68	2.44
	Manual	6.15	8.50	0.98	2.36	2.68	2.44
F74C	Auto	6.35	9.17	0.98	2.36	3.15	2.91
	Manual	6.95	9.80	0.98	2.36	3.15	2.91
F74H	Auto	8.44	11.18	0.98	2.36	3.15	2.91
	Manual	9.04	11.81	0.98	2.36	3.15	2.91

\* Standard service indicator  
# Minimum clearance required to remove bowl

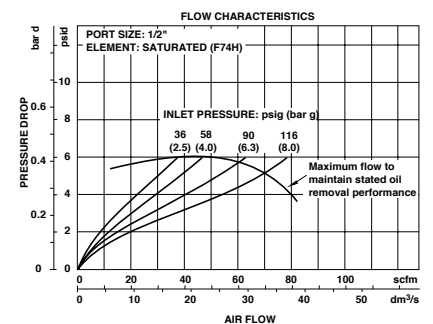
F73



F74C



F74H



Dimensions in inches (mm)