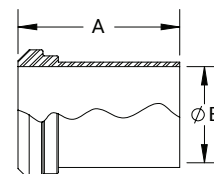


Bevel Seat Ferrules

Light Wall Tank Plain Bevel Seat Ferrules - 14WL



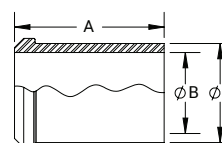
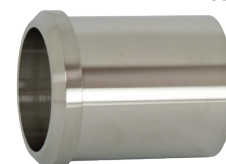
Tube O.D.	A (in)	B (in)	Nominal Wall (in)	304 Stainless Steel Part #
1"	2.00	.87	.065	14WL-G100
1-1/2"	2.25	1.37	.065	14WL-G150
2"	2.50	1.87	.065	14WL-G200
2-1/2"	2.75	2.37	.065	14WL-G250
3"	3.00	2.87	.065	14WL-G300
4"	4.00	3.83	.083	14WL-G400



Heavy Wall Tank Plain Bevel Seat Ferrules - 14W



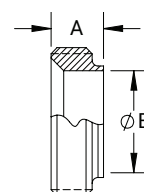
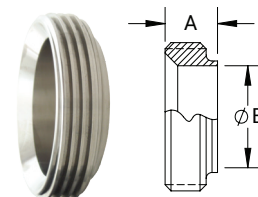
Size	A (in)	B (in)	C (in)	304 Stainless Steel Part #
1"	2.38	.87	1.16	14W-G100
1-1/2"	2.53	1.37	1.68	14W-G150
2"	2.78	1.87	2.19	14W-G200
2-1/2"	3.06	2.37	2.71	14W-G250
3"	3.53	2.87	3.22	14W-G300
4"	4.31	3.83	4.26	14W-G400



Short Threaded Bevel Seat Weld Ferrules - 15TRF



Tube O.D.	A (in)	B (in)	Nominal Wall (in)	304 Stainless Steel Part #	316L Stainless Steel Part #
1"	.72	.87	.065	15TRF-G100	15TRF-R100
1-1/2"	.72	1.37	.065	15TRF-G150	15TRF-R150
2"	.75	1.87	.065	15TRF-G200	15TRF-R200
2-1/2"	.88	2.37	.065	15TRF-G250	15TRF-R250
3"	.91	2.87	.065	15TRF-G300	15TRF-R300
4"	1.03	3.83	.083	15TRF-G400	15TRF-R400



Long Threaded Bevel Seat Weld Ferrules - 15A



Tube O.D.	A (in)	B (in)	Nominal Wall (in)	304 Stainless Steel Part #	316L Stainless Steel Part #
1"	1.38	.87	.065	15A-G100	15A-R100
1-1/2"	1.50	1.37	.065	15A-G150	15A-R150
2"	1.50	1.87	.065	15A-G200	15A-R200
2-1/2"	1.75	2.37	.065	15A-G250	15A-R250
3"	1.75	2.87	.065	15A-G300	15A-R300
4"	1.75	3.83	.083	15A-G400	15A-R400

